

Author Bravo Telecom • Update: 22-05-2024

Quick Installation Guide

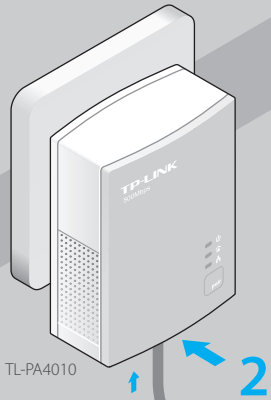
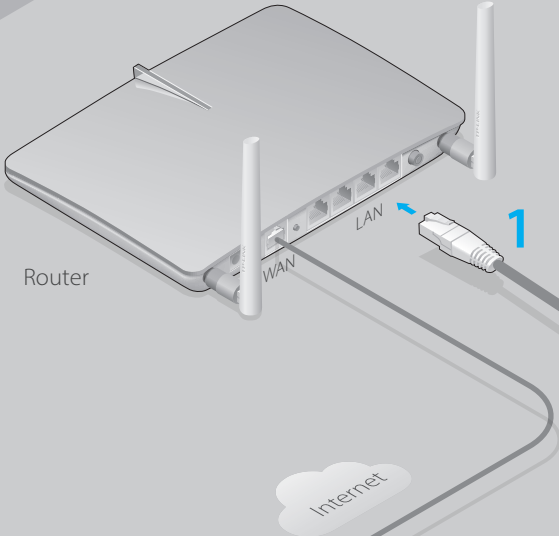
AV500 Nano Powerline Adapter

Applicable to TL-PA4010 and its multiple-pack kits

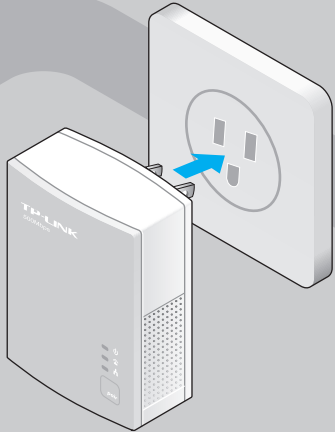
7106505086 REV2.0.0

Plug and Play

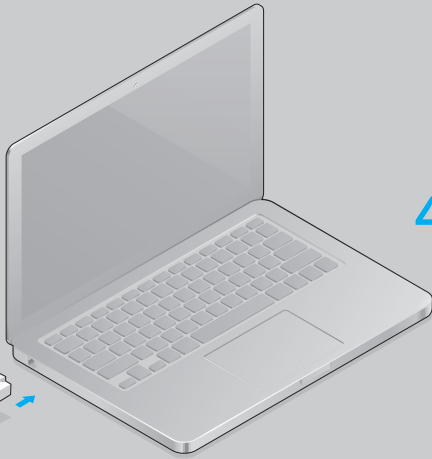
Powerline



Wait until the Powerline LED turns on.

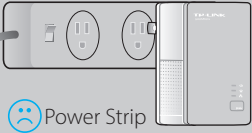


More: To add additional Powerline adapters or extenders with the default settings, simply plug them into the wall sockets on the same electrical circuit.



4 Enjoy!

Attention



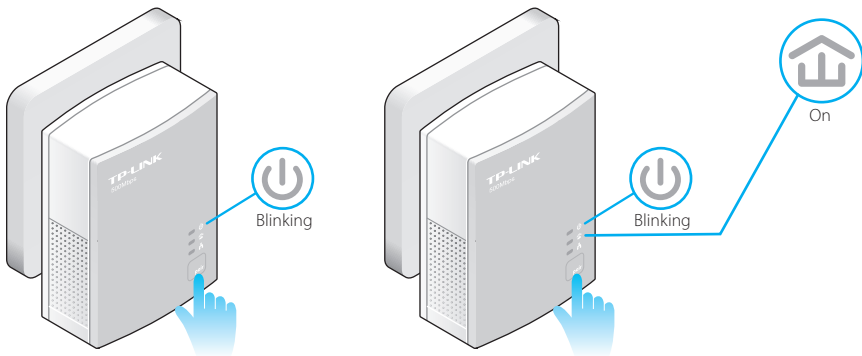
Our best wifi routers

Set Up a Secure Powerline Network by Pairing (Optional)

Paring is used to create or join a secure powerline network.

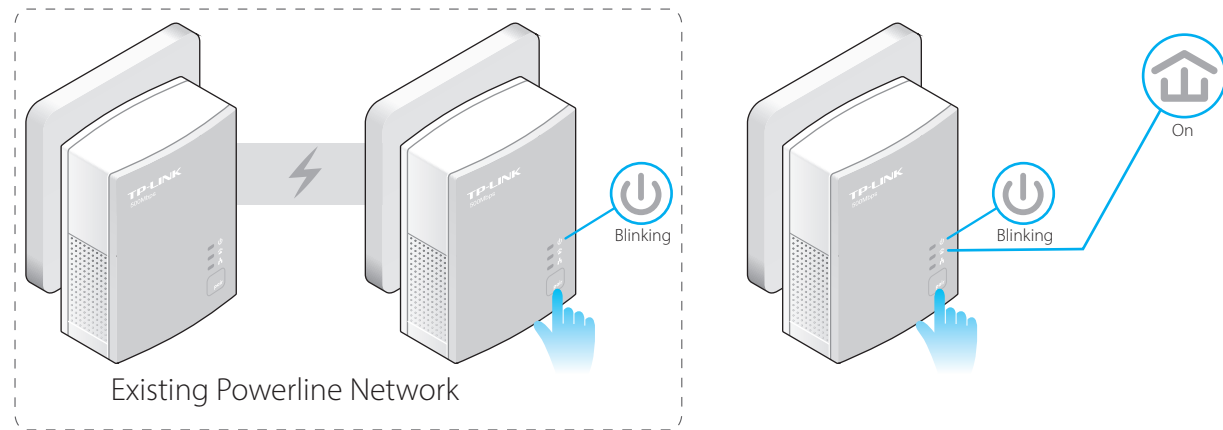
To create a secure powerline network:

- 1 Press the **Pair** button on one adapter.
- 2 Press the **Pair** button on another adapter.
- 3 Done.



To join an existing secure powerline network:

- 1 Press the **Pair** button on any powerline adapter in the existing powerline network.
- 2 Press the **Pair** button on the new adapter.
- 3 Done.



LED and Button Legend

LED	STATUS	DESCRIPTION
Power	On/Off	The powerline adapter is on or off.
	Blinking	Blinking every second: Pairing is in process.
	Blinking every 15 seconds	Power-Saving Mode is on.*
Powerline	On	The powerline adapter is connected to a powerline network.
	Blinking	The powerline adapter is transferring data.
	Off	The powerline adapter is not connected to any powerline network or is in Power-Saving Mode.
Ethernet	On/Off	The Ethernet port is connected or not connected.
	Blinking	The Ethernet port is transferring data.

* Five minutes after the connecting device is turned off, the powerline adapter will automatically switch to Power-Saving Mode.

BUTTON	DESCRIPTION
Pair	Press and hold for 1 second to set up or join a secure powerline network. Press and hold for 8 seconds to leave an existing powerline network.

FAQ (Frequently Asked Questions)

Q1. How to troubleshoot if there is no Internet connection after pairing the adapters?

- A1. Check if you have an Internet connection by connecting the computer directly to the modem or router.
- A2. Check the hardware connection between your modem and router.
- A3. Make sure all the Powerline LEDs are on. If they are not, reset or pair all your powerline adapters again.
- A4. Make sure your computer's IP address is in the same segment as your router's.
- A5. Make sure all powerline adapters are on the same electrical circuit.

Q2. What can I do if a successfully-paired powerline adapter does not reconnect after it has been moved to a new location?

- A1. Make sure all powerline adapters are on the same electrical circuit.
- A2. Try to pair it again with another adapter, and make sure the Powerline LED is on before moving it to a new location.
- A3. Check for possible interference, such as washers, air conditioners or other household appliances that may be too close to one of the powerline adapters.



<http://www.tp-link.com/en/support/faq>
Scan the QR code to access the Technical Support page.

More advanced configurations, such as reset, firmware upgrade and QoS configuration, can be accessed through the Powerline Utility. You can install the Powerline Utility from the resource CD (for Windows only) or download it from the TP-LINK official website (for Windows and Mac OS X).